

# Xtruder RAVEN

Art.no - XRA-00-14-01

## Survivability and stealth

The Xtruder RAVEN is an InfraRed vision enhancement illuminator made specifically to increase the operational capabilities for a multitude of night time operations, while maintaining a very low detectability.

The RAVEN InfraRed vision enhancement illuminator provides a perfectly shaped light optimal for various covert operations, such as high speed driving with NVG (Night Vision Goggles) or vision enhancement camera systems - be it on land or at sea. Its broad areas of use includes also stationary sensor systems as well as helicopter integrations.

## Wise Shadow Tech ®

The RAVEN's tailored light beam is shaped deliberately to match an infrared driving enhancement camera system in such a way that it fits the screen perfectly, illuminating only the camera field of view and thereby reducing the risk of spill light that ultimately can lead to detection.

The light beam is shaped to reduce the direct ground reflection and thereby enhancing the driver's depth perception enabling a more stealthy and secure navigation.

### The Wise Shadow Tech has three functionalities:

- The RAVEN only illuminates the area portrayed by the camera system.
- No ground reflection to disturb the IR image, giving a very even and smooth picture.
- No unnecessary spill light providing a much lower IR profile providing the user the option to utilize ground cover when applying the IR driving lights.

**"Don't be acquired.  
Don't be seen.  
Don't be hit."**

## Product features



**Fully digital illuminators**



**Modular & upgradable**



**Single output**



**Instant IR, including NIR or SWIR**



**Minimal lifetime maintenance**



**Optimized for size, weight  
and power consumption (SWAP)**



### **Adjustable and Scalable**

Xtruder RAVEN has multiple pre-fixed lens options which allows for focused or extended IR modes. It can be configured to beam angles up to 80 degrees horizontal, 30 degrees vertical and can illuminate at 50 meters. With a weight of only 600gr, Xtruder RAVEN has a unique performance to weight ratio. To date it is probably the smallest, lightest and most ruggedized illuminator on the market still complying with requirements for various land and maritime platforms.

### **Instant output NIR/SWIR**

Xtruder RAVEN is a compact digital illuminator with a wide-ranging infrared spectrum. The IR capacity includes wavelengths in the range of 810 – 1650 nm, from NIR to SWIR.

### **Fully digital and integrable**

Xtruder RAVEN can also be integrated as a part of an EO/IR module or delivered with an analogue control panel for seamless operation. The Xtruder RAVEN is easily integrated to existing platforms with both analog and RS422 interface.

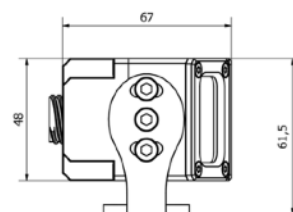
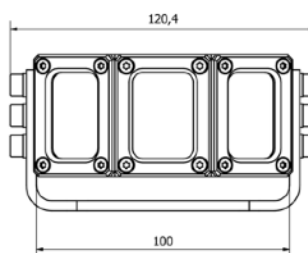
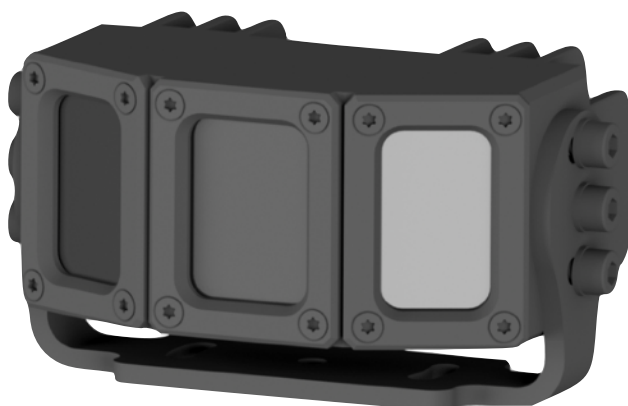
### **Ruggedized and EMC compliant**

All Xtruder military portfolio products meet the highest requirements for electromagnetic interference according to EMC EU directives and military standards, as well as IP68, for prolonged immersion in water. The low EMC profile enables the placement of the RAVEN near any counter IED equipment including antennas or sensors.

**RAVEN is ITAR-free and not controlled by export regulation.**

### **Minimal lifetime maintenance**

Raven is entirely based on solid state technology and has no moving parts. Furthermore, the LED technology used makes the RAVEN a near zero maintenance product with a high durability and long-life cycle.



\*Dimensions are estimates and may change.

## Specifications

## RAVEN

<b>Height:</b>	48 mm
<b>Width:</b>	100 mm
<b>Depth:</b>	67 mm
<b>Weight:</b>	600 gram
<b>Surface Treatment:</b>	Alu Hard Anodized MIL A8628 Type III Class 2 Black.
<b>MILSTD:</b>	461E/F, 810G/H, 1275SE
<b>Power consumption:</b>	25-40 W
<b>Standby power consumption:</b>	Less than 3 W
<b>Input range (DC):</b>	12-32V
<b>Divergence:</b>	80 degrees horizontal, 30 degrees vertical
<b>LED options:</b>	940 nm, others on request
<b>Connector:</b>	MIL-DTL 38999 series
<b>Glass:</b>	Black Acrylic, glass filters on request

## About Wiseled

Since the founding of Wiseled in 2003, the company has evolved into an internationally recognized provider of LED and laser illuminators. This has been achieved by means of continuous research and development, engineering and manufacturing excellence, and a steadily growing range of products for the military, maritime and security markets.

Our products are designed for various applications, including integration with optic and sensor modules to enable operations in extreme environmental conditions. Our solutions enhance operator's ability to observe, detect and engage targets with increased accuracy and reduced collateral damage.

Wiseled ApS, Nallebakken 5, 3250, Gilleleje, Denmark  
E-mail: [contact@wiseled.com](mailto:contact@wiseled.com)

[www.wiseled.com](http://www.wiseled.com)



**Designed and manufactured in Denmark**

