

PROTECTION BEYOND FENCES



SpotterRF Compact Surveillance Radar

WIDE-AREA RADAR DETECTION AND AUTO-CAMERA TRACKING



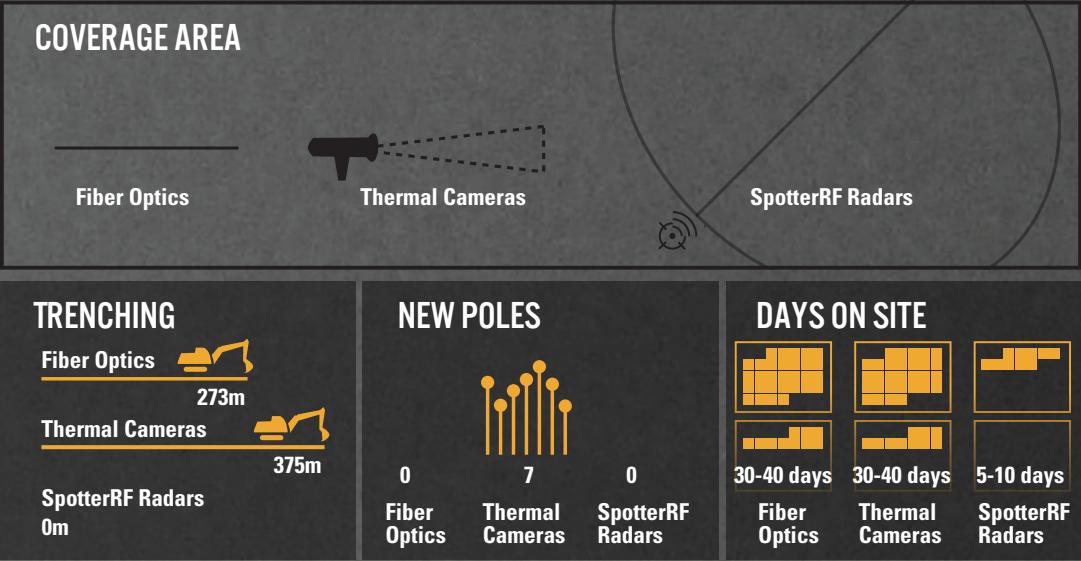
SpotterRF radar systems can be deployed using existing infrastructure which saves time onsite and reduces overall system cost. Works in fog, rain, snow, wind, dust, and no-light conditions.

FOR MORE INFORMATION, CONTACT:
sales@spotterrf.com
801-742-5849
spotterrf.com

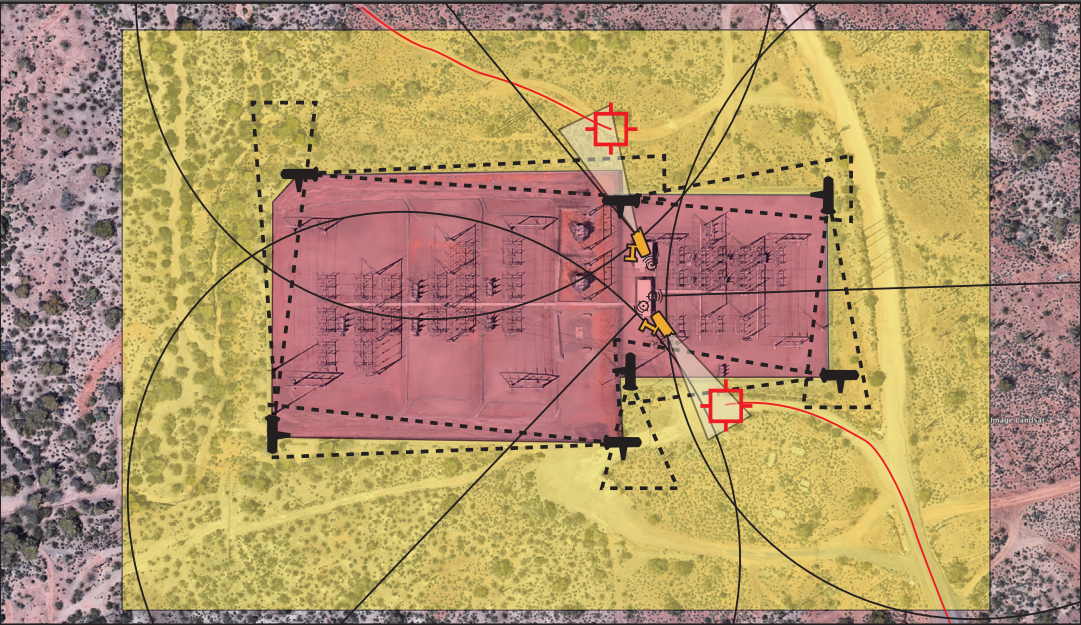


MORE COVERAGE - LESS COST

Sample Site Comparison: Substation



Substation Coverage



PROTECTION BEYOND FENCES

Customer Quotes

“The results are very encouraging. The cameras and compact radar extends our view to 1000 meters and effectively covers a wide area of precision object tracking with minimal security personnel and thus, a remarkably low cost per acre. This gives us peace of mind that we are doing everything possible to protect not only our critical facilities, but the citizens of San Diego.”

–Security Administrator,
City of San Diego

“SpotterRF radar greatly enhances the range and intelligence of the best camera and analytics available. It’s easy to show clients the value of adding this low-cost radar capability to new or existing systems.”

–Brad Dangerfield
Industrial Camera Systems



“The Spotter radars have helped us protect large areas at a relatively low cost and footprint.”

–Franco DeAngelis, CTO
BCF Solutions, DoD, Security
and Surveillance, Mid Atlantic

Existing SpotterRF Installations

Airports	Gas Compressor Stations	Oil Wells
Bridges	Government Facilities	Residential Estates
Commercial Facilities	Mobile/Temporary Protection	Substations
Construction Sites	Military Force Protection and ISR	Service Centers
Dams	Mines	UAV Protection
Data Centers	Nuclear Power Plants	
Fish Farms		

Specific project references available upon request

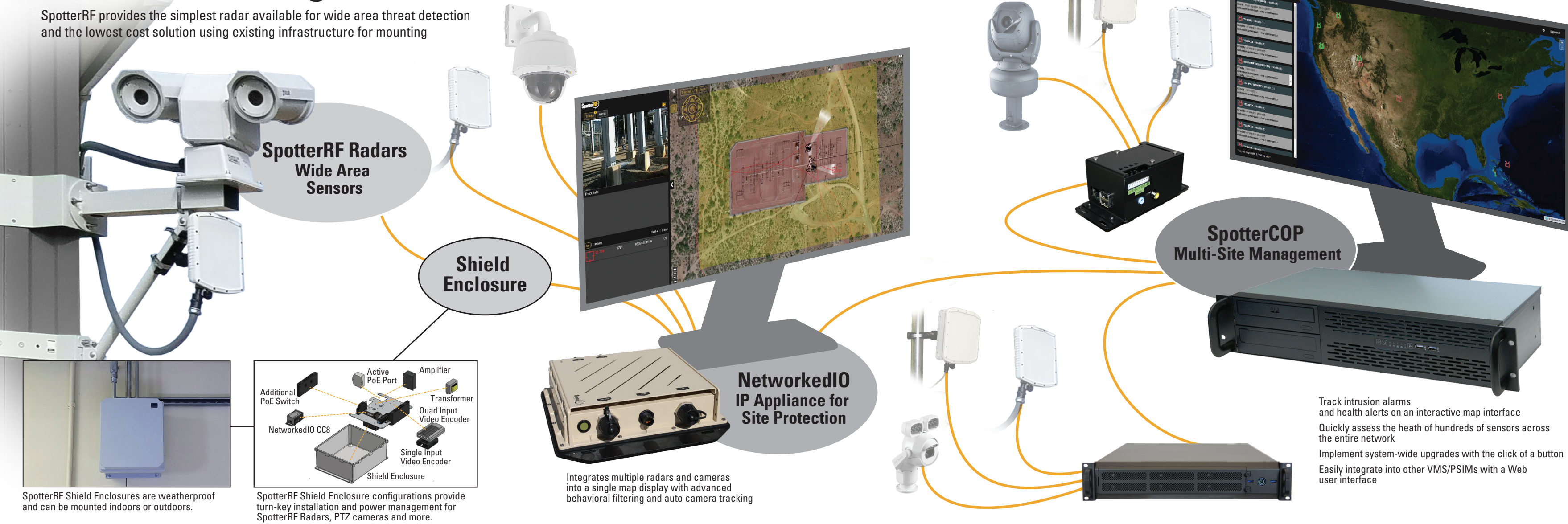
For more information contact

sales@spotterrf.com 801-742-5849



Multi-Site Integrated Perimeter Protection

SpotterRF provides the simplest radar available for wide area threat detection and the lowest cost solution using existing infrastructure for mounting



RESPONSE TIMELINE

